



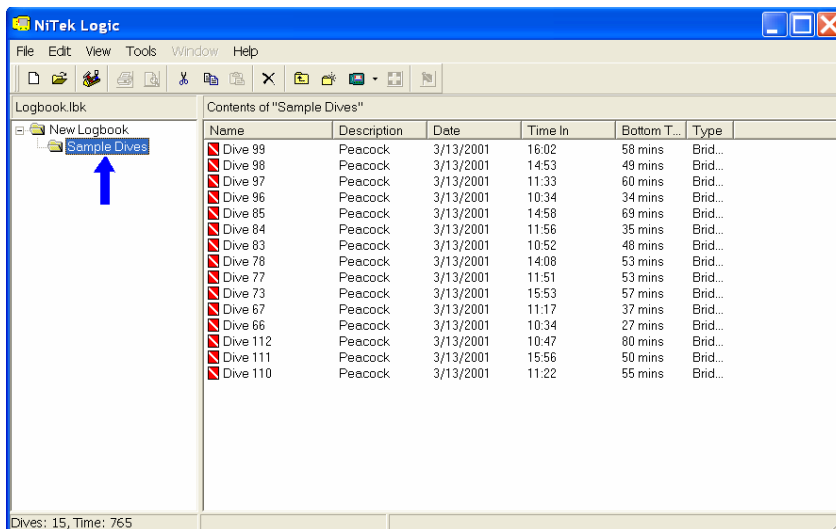
Send your dive profiles using: DiveRite *NiTek Logic* Software




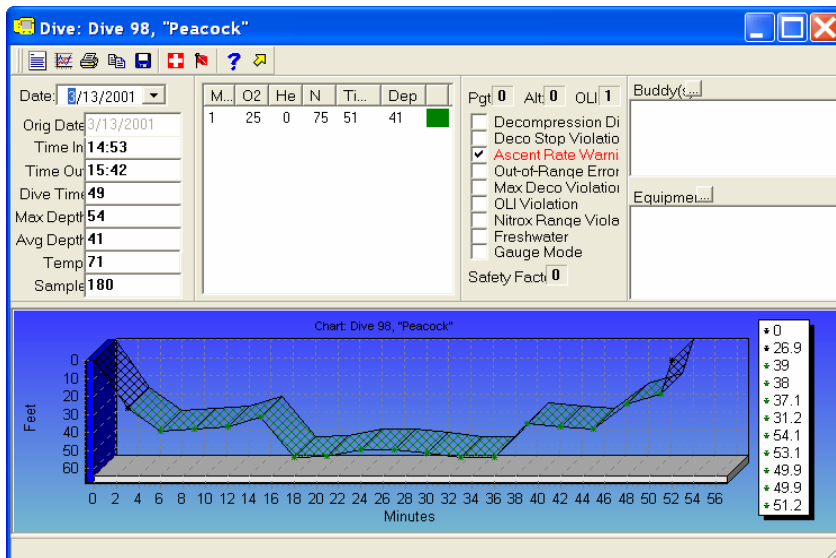
The NiTek Logic application downloads DiveRite computers and provides the means to view dive profiles and maintain the dive log. The NiTek Logic is level 3 compatible with PDE and complete dive logs can be exported to DAN.

Export Dive Rite Data to DAN:

1. Execute  NiTek Logic.exe file.
2. Find the file that you would like to export.



3. Select a dive, and double click to open the Dive Detail form (or click ).



4. Click the  button to go the “Project Dive Exploration – Additional Information” form.

Click User Information tab:

Complete the “User Information”. This information need to be entered only once. The “Last name”, “First name”, “Date of Birth”, “Phone” and “E-mail Address” information in

NOTE: Make sure you enroll for PDE on the DAN website in order to obtain a DiverID number.

“User Information” tab are mandatory, and need to be filled in.

Click Dive Information tab:

Complete the dive information, then click “Send to DAN” command button. If MS Outlook is not set as your default email application; you can find the file at “C:\Program Files\DiveRite” folder, and using your email application, attach file to an email message and send it to DASData@dan.duke.edu.